



Issue 3

# From the Sierras to the Seas

Cal-Pac North District Newsletter  
United Women in Faith



June 2025

## Table of Contents

<i>Calendar .....</i>	<i>2</i>
<i>Social Action.....</i>	<i>5</i>
<i>We are Stewards .....</i>	<i>5</i>
<i>Treasurer .....</i>	<i>6</i>
<i>Nominations .....</i>	<i>7</i>
<i>Communications .....</i>	<i>7</i>
<i>National Mission Institutions ..</i>	<i>8</i>
<i>UWF Handbook .....</i>	<i>8</i>
<i>2024-2025 North District Leadership Team Members.....</i>	<i>9</i>
<i>Next Newsletter August 2025..</i>	<i>10</i>
<i>Nurture Your Soul.....</i>	<i>10</i>
<i>Vonner Speaks at the Capitol..</i>	<i>11</i>
<i>Mourning the Pope .....</i>	<i>11</i>
<i>Program Resources.....</i>	<i>15</i>
<i>UWF Podcasts .....</i>	<i>15</i>
<i>Forms Section .....</i>	<i>16</i>
<i>How to use fillable forms:.....</i>	<i>16</i>
<i>2025 Newsletter Schedule .....</i>	<i>16</i>
<i>FORMS Table of Contents.....</i>	<i>16</i>
<i>Reading Program .....</i>	<i>17</i>
<i>Reading Reporting Form.....</i>	<i>18</i>
<i>Remittance Form.....</i>	<i>19</i>
<i>Combined Attachments .....</i>	<i>20</i>
<i>Mission Today.....</i>	<i>21</i>
<i>Charter for Racial Justice .....</i>	<i>23</i>
<i>Local Roster.....</i>	<i>25</i>
<i>Gifts &amp; Graces.....</i>	<i>27</i>
<i>Subscriptions .....</i>	<i>28</i>



## *An Appeal from Sally Vonner*

My Sister in Christ,

Have you had the opportunity to visit and personally see the work of one of our nearly 90 National Mission Institutions (NMIs) throughout the United States?

If you have, then you know they do vital work to serve marginalized communities and vulnerable populations. They make your United Women in Faith mission of putting love in action possible.

Today many of our NMIs are hurting and facing an uncertain future due to federal policy changes.

NMIs that work with migrant or refugee communities are under pressure to address immediate needs while facing increasing government scrutiny. Some NMIs have received stop-work orders from the current administration on some of their work, and others have received letters requiring the

*Continued on p.2*

## **President**

Diane Garner



*“He has told you, O mortal, what is good; and what does the Lord require of you but to do justice, and to love kindness, and to walk humbly with your God?”*

Micah 6:8 (NRSV)

Please consider adding your voice to the Micah 6:8 Pledge. Here is the link: <https://win.newmode.net/unitedwomeninfaith/todojusticetolovekindnesstowalkhumblywithgod>

On the UWFaith website, it states: “Through each election cycle, the call of our faith endures. We will, therefore, anchor ourselves in the call to remember what the Lord requires of us; to do justice and to love kindness and to walk humbly with the Lord your God.”

*Continued on p.3*

*Continued from p. 1*

organizations to release the personal information of clients in order to continue to receive federal funding.

“We are seeing an increase of refugee families in our shelter and pantry because of the elimination of immigrant funds for those who have arrived in the United States via the legal immigration process.”

NMIs that address food security and early childhood education for at-risk populations are operating in a climate of uncertainty due to changes in federal grants for their programs. Many have had to reduce staff and services because of the cuts or are no longer being reimbursed for expenses already incurred:

“We have reduced the number of operating days at our pantry from five days a week to two days a week. This pantry is the only one that was open five days a week in the rural county it serves.”

Sisters, we read in Micah 6:8, “And what does the Lord require of you? To act justly and to love mercy and to walk humbly with your God.”

I am asking you today to act justly with a financial gift to support our National Mission Institutions. Help them close these new and unexpected funding gaps. United Women in

Faith have faced adversity and times of trial throughout our history. Our NMIs have, too. And together, these NMIs are innovating new ways to continue their work.

At The Bethlehem Center in Chattanooga, TN, their leadership is actively pursuing alternative revenue sources in order to continue the work without disruption.

The Read to Lead Academy program is supported by the Nita M. Lowey 21st Century Community Learning Center program. While this funding is manageable at the moment, changes in state laws and potential shifts in the U.S. Department of Education could affect this funding source in the future. The program has been a historical cornerstone of our organization, and we remain committed to executing it. However, we are actively exploring ways to reduce our reliance on government support moving forward.”

Encourage our NMIs to continue their work by showing your support. Not only will your financial gift bolster their bottom line, it also sends a message to these organizations that they are a beloved part of United Women in Faith. We need their essential work to continue—to be the hands and feet of Jesus in

## *Calendar*

***June 14***

***UWF Luncheon, Cal-Pac Annual Conference, Indian Wells, CA***

***July 11-12***

***Mission u at Cal State Long Beach (p. 4)***

***September 20***

***North District Annual Celebration Location TBD***

***October 18***

***53rd Cal-Pac Celebration Location TBD***

marginalized and vulnerable communities.

Faithfully Forward, ***Sally Vonner***  
General Secretary/CEO

**United Women in Faith has set up a fund to support the work of the NMIs.** 100% of your gift will support this work. I am asking you to prayerfully give today. The money will be disbursed to the NMIs who have the most urgent need as a result of the changes in the federal funding landscape.

Checks can be mailed to the national office, or given to your local treasurer.

Please include **National Mission Designated Fund (3001152)** in the memo line.

*Continued from p.1*

Together, our voice is louder.  
Together, we make a difference!

\*\*\*\*

Keep in mind as your unit plans for future programs, your District Leadership Team members are a resource along with the 2025 Program Book. Invite us! We look forward to getting to know you and your units better.

*David and Margaret Youth  
and Family Services*

On April 29, North District was welcomed by Jane Woods, VP of Development and Michael Miller,

Senior VP of Therapeutic Programs, to the campus of David and Margaret Youth and Family Services, one of nearly 90 National Mission Institutions. We enjoyed a beautifully prepared lunch by the Dave and Maggie's Cafe staff, heard about David and Margaret's current and future work with children, youth and families, and took a walking tour of the tree-lined campus...but not all 17 acres of this campus! This opportunity gave a "face" to the work of United Women in Faith.

In attendance were women from Glendale First, North Hollywood, Pasadena First, Santa Barbara First, Scott and Sherman Oaks.

More information about UW Faith's history and involvement with David and Margaret can be found at [davidandmargaret.org](http://davidandmargaret.org). Click on *Who We Are* along the top.

Practicing hope,  
Diane Garner  
North District President  
[rdgarner47@hotmail.com](mailto:rdgarner47@hotmail.com)  
(805)795-0344

(Pictures and information on pages 12-14 in this newsletter.)



United  
Women  
in Faith

## **Mission**

*The Mission of United Women in Faith is to connect and nurture women through Christian spiritual formation, leadership development, creative fellowship, and education so that they can inspire, influence and impact local and global communities.*

## **Vision**

*The Vision of United Women in Faith is a world in which women, children, and youth can thrive and reach their fullest potential.*

## **Purpose**

*The Purpose of United Women in Faith is to be a community of women whose purpose is to know God and to experience freedom as whole persons through Jesus Christ; to develop a creative, supportive fellowship; and to expand concepts of mission through participation in the global ministries of the church.*



United  
Women  
in Faith



# Mission u

**JULY 11-12, 2025 – Cal State Long Beach**

**JULY 18-19, 2025 – Honolulu, HI**



Honolulu First UMC

**Registration is  
now open!!**

## TWO OPPORTUNITIES!

We are thrilled to be offering not one, BUT TWO opportunities to participate in this year's Mission u! First in California and then in Hawaii!

**Registration Opens** on May 15, 2025  
Registration ***closes*** June 15

**Co-Dean:**

Barbara Miller  
(626) 327-0914  
barbmiller700@gmail.com

**Co-Dean:**

Theresa Ellis  
(973) 970-8791  
ellis.theresa@gmail.com

**California**

Double Occupancy: \$195.00  
Single occupancy: \$240.00  
Commuters (no dorm or meals): \$115.00  
Youth & Children: \$100.00  
Registration link <https://na.eventscloud.com/841793>

**Hawaii**

Two days (incl. Dinner & Lunch): \$80.00  
Saturday only (incl. Lunch): \$50.00  
Youth & Children (2 days): \$40.00  
Youth & Children (Sat. only): \$30.00  
Registration link: <https://na.eventscloud.com/842427>

For more information: <https://uwfaith.org/events/mission-u/>



## Next Newsletter

August 2025

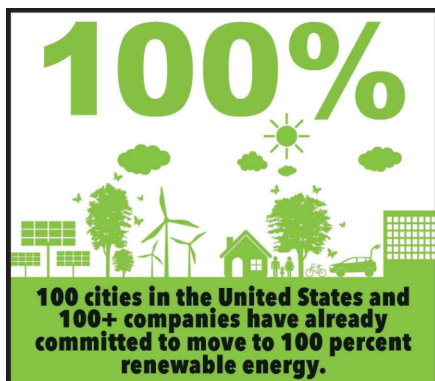
### *We are Stewards of God's Creation*

"All creation is God's, and we are responsible for the ways in which we use and abuse it ... God has granted us stewardship of creation. We should meet these stewardship duties through acts of loving care and respect." (Social Principles, ¶160)

Protecting God's creation and those who are disproportionately affected by global climate change is more than our belief; it is one of our core principles.

Visit the UWF [e-store](#) for our climate justice resources.

<https://uwfaith.org/what-we-do/serve-and-advocate/climate-justice/>



## ***Social Action***

Labarbara J.  
Madison



Greetings to my sisters of United Women in Faith (UWF):

We in the North District have had several events that have impacted our sense of well-being and security: changing of our country leaders and administration, wild-fires and massive destruction of communities. As May brings up brightness and hope, so does Hebrews 11:1 (NIV):

*"Now faith is confidence  
in what we hope for and  
assurance about what  
we do not see."*

God is faithful and He gives us the assurance that no matter how horrific things and circumstances may appear or change in our lives, He is there and will always

be our anchor, refuge and hope in this world.

In our jobs as stewards over Earth, we are reminded that everything belongs to God and we have a moral responsibility and are challenged to take care of our natural resources...to be good stewards over what has been provided for us. This includes our climate. We must be diligent in our climate fight against pollution. As sisters in faith, we must raise our voices, work hard and put our faith in action by speaking boldly against pollution around the world, fighting to make our Earth and its resources more sustainable for future generations.

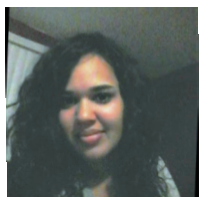
Over the next three years we will continue our campaign for Climate Justice. To learn more, take action, be informed and to become advocates, just click on the QR code below.

Humbly submitted,  
Labarbara Madison  
Social Action Coordinator  
[Labarbara.madison@gmail.com](mailto:Labarbara.madison@gmail.com)  
(626) 627-9788



# Treasurer

A.S. Hedges



*"In whose hands is mischief, and their right hand is full of bribes. But as for me, I will walk with my integrity: redeem me, and be merciful unto me."*  
Psalm 26: 10-11 (KJV)

Take time meditate and read Psalm 26:1-12, encourage Giving Godly.

Thank God!

Dear Sisters in Christ,

Thank you to those for attending the North District April Mission Trip to David and Margaret Youth and Family Services; I heard the experience was rejuvenating and uplifting. Please consider a visit to New

Entra Casa, an additional United Women in Faith supported mission located in San Diego.

## Upcoming Events

June 14: United Women in Faith Luncheon- California Pacific Annual Conference- Indian Wells, California

July 11-12: Mission u - Cal State Long Beach (p. 4)

July 18-19: Mission u - Hawaii

September 20: North District Annual Celebration

## Reminder

Remittances provided after the 17th of each month will be included for the following month.

*Review North District From the Sierras to the Seas and California-Pacific Pacific Waves.*

Interested in sharing your event with our local United Women in Faith? Please email information to Kim Smith:  
[uwfnorthdistrictnewsletter@gmail.com](mailto:uwfnorthdistrictnewsletter@gmail.com)

The next deadline is Thursday, July 10 with publication date August 1.

Women with amazing creativity and talents give back a portion of what God has gifted with the support work of United Women in Faith. Always looking for members; if interested in joining the North District Team, please email Megan Pinnock at [megpinn@sbcglobal.net](mailto:megpinn@sbcglobal.net)

Lord's Love,

A.S. Hedges  
[visionarychair@gmail.com](mailto:visionarychair@gmail.com)

Make your checks payable to: North District United Women in Faith

Mail to: A.S. Hedges,  
607 Foothill Blvd,  
#1549, Flintridge,  
California 91012

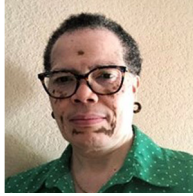
**We serve.**  
**We advocate.**  
**We make a difference.**

## North District Leadership Team

Names and phone numbers can be found on p. 9-10.

# Nominations

Megan Pinnock



*"His master replied,  
'Well done, good and  
faithful servant! You  
have been faithful with a  
few things: I will put you  
in charge of many things.'"*  
Matthew 25: 23 (NIV)

Greetings!

We had a wonderful and inspiring opportunity to meet Sally Vonner, General Secretary and CEO of United Women in Faith when she visited us at Pasadena First United Methodist Church (FUMC) on Sunday, March 16. We heard about her work at the General Conference and what is required of us at the local and district levels. At the end of her conversation with us, we were treated to a delicious meal provided by the FUMC's local UWF unit and reconnected with UWF sisters from throughout southern California.

On Tuesday, April 29, the North District members and its leadership team visited David and Margaret Youth and Family Services site in La Verne. We had a lovely time together as we were

led on a tour of the site, saw where the students and families are educated and housed in their lovely dorms, had a tasty lunch that they provided for us in their cafeteria, learned about their operation processes and how they benefit from our financial contribution. It was an inspiring and impactful experience which we truly enjoyed.

The North District (ND) leadership members (officers) have been busy. And some of us will be terming out this fall. We offer a Gift & Graces form (p.27) in our newsletter for you to complete for yourself or to make copies to share with other women. We also offer training in October for those who may be considering joining the North District team.

Are there faithful women of faith in your community with whom you have a relationship who could be introduced to your local unit to become members with hope of moving to the district level?

If so, let's reach beyond our church walls and invite them to your local unit so as to support and uplift the **Purpose** of the United Women in Faith.

The following **open positions** require each of us to consistently pray that God sends us women who are committed to serve in His Kingdom here on earth:

Secretary  
Membership, Nurture & Outreach  
Coordinator  
Social Action Coordinator  
Spiritual Growth Coordinator  
Mission & Education  
Interpretation Coordinator  
Committee on Nominations  
Chair and two members

In addition, we would love to have district Language Coordinators to help us reach out to women who speak and read in these languages: Spanish, Korean, Tongan.

Cell: (626) 861-5429  
[megpinn@sbcglobal.net](mailto:megpinn@sbcglobal.net)

# Communications

Kim Smith



Are you looking for a way to grow your faith? Are you looking to meet other faithful women who value UWF like you do? Here's your chance! Plan to register for Mission u on July 11-12.

I went last year for the first time and had a wonderful experience. We met for worship, singing and a sermon in the morning and went to several small groups  
*Continued on p.8*

after that. This year's book, **Practicing Hope**, promises to explore hope, particularly when hope seems hard to find. How does Christ teach us to embody hope when our backs are against the wall? Small groups will investigate these questions.

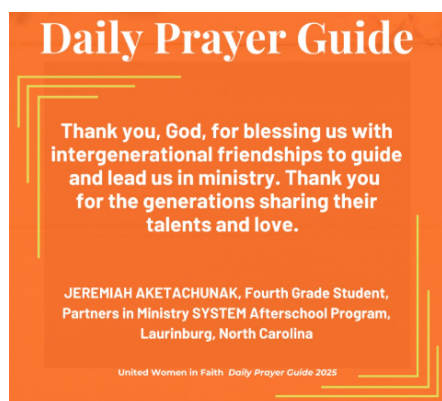
Food service at Cal State Long Beach offers a variety of delicious options to choose from - everything from salads, several hot entrees, and vegan. You'll never go hungry!

In the evening there is time to meet other women in the dormitory and do some fun activities together.

Register by June 12 for this enriching event at <https://na.eventscloud.com/841793>

I highly recommend going to Mission u. See you there!

In Christ,  
Kim Smith  
[rivermiss05@gmail.com](mailto:rivermiss05@gmail.com)  
(218) 556-7516



## Reading the Bible

Some people want to read, engage, and apply the Bible, but are intimidated by its 770,000 plus words divided into 31,000 verses and nearly 1,200 chapters. What are we supposed to do with this ancient library of 66 divinely inspired books?

By reading God's Word, we get to know God better. Each page reveals God's character and tells us a little more about God's plan. By engaging God while reading, we find that God's word changes, transforms, and revitalizes us.

Ten ways to engage the Bible:

**Listen to it:** Nehemiah 8:3; Luke 24:27

**Read it for yourself:** 2 Timothy 2:15; Revelation 1:3

**Learn to study it:** Psalm 119:11, 18, 27

**Memorize it:** Psalm: 37:31; 119:11

**Meditate on it:** Joshua 1:8

**Discuss it:** Ephesians 5:19

**Teach it to others:** Colossians 3:16

**Pray the Bible:** Ephesians 1:15-23, 3:14-21

**Sing the Bible:** Colossians 3:16

**Do the Bible:** James 1:22

As you engage and grow in your consistent reading of God's Word, you will be blessed in nurturing your own special relationship with God. Micah 6:8 reminds us, *"And what does the Lord require*

*of you? To act justly and to love mercy and to walk humbly with your God."*

## National Mission Institutions Serve

"National Mission Institutions serve and advocate for marginalized women and children. United Women in Faith helps support 85 such places throughout the United States. It's a part of the organization's history.

"Bethlehem Centers of Nashville began as United Methodist Neighborhood Centers back in 1894, when a group of Nashville, Tennessee, women associated with the Methodist church were actively involved helping immigrant families."

See more about the institution on pages 30-35 of the May/June *response* magazine.

## UWF Handbook

The 2025-2028 UWF Constitution and Bylaws Handbook is now available in the UWF Shop. To download, go to: <https://uwfaithresources.org/prodDetail.cfm?productID=12087&catid=2196>

**Cal-Pac North District website:**  
<http://www.calpacumc.org/uwfaith>

## 2024-2025 North District Leadership Team Members

### ***President***

***Diane Garner***  
(805) 795-0344  
[rdgarner47@hotmail.com](mailto:rdgarner47@hotmail.com)  
4817 Avedon Road  
Moorpark, CA 93021  
Pasadena First UMC

### ***Vice-President***

***DeeAnna Duncans***  
(214) 931-9613  
[deeannaduncans@gmail.com](mailto:deeannaduncans@gmail.com)  
14057 Valley Vista Blvd  
Sherman Oaks, CA 91423  
Sherman Oaks UMC

### ***Secretary***

Vacant

---

### ***Treasurer***

***Amber Hedges***  
607 Foothill Blvd, #1549  
Flintridge, CA 91012  
[visionarychair@gmail.com](mailto:visionarychair@gmail.com)  
Scott UMC (Pasadena)

### ***Communications Coordinator***

***Kim Smith***  
(218) 556-7516  
[rivermiss05@gmail.com](mailto:rivermiss05@gmail.com)  
558 E Magnolia Blvd, Apt H  
Burbank CA 91501  
Burbank First UMC

### ***Social Action Coordinator***

***Labarbara Madison***  
(626) 296-3311 Home  
(626) 627-9788 Cell  
[labarbara.madison@gmail.com](mailto:labarbara.madison@gmail.com)  
840 Neldome St  
Altadena, CA 91001  
Scott UMC (Pasadena)

---

### ***Committee on Nominations***

***Megan Pinnoch, Chair***  
Cell: (626) 861-5429  
[megpinn@sbcglobal.net](mailto:megpinn@sbcglobal.net)  
872 E Sacramento St  
Altadena, CA 91001  
Scott UMC (Pasadena)

### ***Members of Committee on Nominations:***

***Rosalie Niemann***  
(818) 517-2788  
[niemann007@sbcglobal.net](mailto:niemann007@sbcglobal.net)  
  
***Lona Seymour***  
(818) 290-4771  
[lseymour1@gmail.com](mailto:lseymour1@gmail.com)

### ***Program Resources Coordinator***

***Marilynne Wilander***  
(626) 278-3314  
[marilynnewilander@gmail.com](mailto:marilynnewilander@gmail.com)  
2018 El Sereno Ave  
Arcadia, CA 91007  
Pasadena First UMC

*Continued on page 13*



## ***Membership, Nurture, Outreach Coordinator***

Position vacant

**Contact: Megan Pinnock**  
[megpinn@sbcglobal.net](mailto:megpinn@sbcglobal.net)

## ***Spiritual Growth Coordinator***

Position vacant

**Contact: Megan Pinnock**  
[megpinn@sbcglobal.net](mailto:megpinn@sbcglobal.net)

## ***Mission Education & Interpretation Coordinator***

Position vacant

**Contact: Megan Pinnock**  
[megpinn@sbcglobal.net](mailto:megpinn@sbcglobal.net)

***Next Newsletter  
August 2025***



## ***Nurture Your Soul***

The Soul Care Deck is designed to help you weave care for your body, mind, and spirit into the fabric of your daily life. This 31-card deck features three categories of cards: grounding exercises to center yourself, inspirational quotes to guide your interactions with the world, and affirmations to nurture your inner journey. There are a couple additional cards left blank for you to write your own practices, affirmations, or inspirational quotes for reflection.

Each card is meant to serve as a reminder that, as women of faith, caring for our well-being and seeking balance is part of embracing the fullness of life that God offers and desires for all people. As we pursue abundant life and joy for ourselves, we are also called to inspire others to seek their hopes and aspirations—as we seek it for others, we find it for ourselves.

These cards are designed to be used personally, or to bring a moment of Soul Care to group settings. They are packaged in a custom-fit box, making them portable and accessible wherever Soul Care is needed.

Order the deck in the UWF Shop:  
<https://uwfaithresources.org/prodDetail.cfm?productID=12332>

Order Soul Care brochures, magnets, t-shirts, posters at:  
<https://uwfaithresources.org/searchresults.cfm?searchText=soul+care>

Plan your own Soul Care retreat using the Soul Care Retreat Toolkit in printed or digital format at: <https://uwfaithresources.org/prodDetail.cfm?productID=11140&catid=2204>

This Soul Care Retreat Manual is a step-by-step guide to design and host a successful United Women in Faith Soul Care Retreat. This manual will explain what soul care is, how to assemble a design team, create a budget, and shape an experience that is appealing and fulfilling for your retreat guests.

This new approach to member enrichment is a welcoming event focused on giving care to the whole person: mind, body, and spirit.

## *Vonner Speaks at the Capitol*

April 17, 2025

For Immediate Release

WASHINGTON – Yesterday, April 16, General Secretary and CEO participated in a Faithful Witness event at the U.S. Capitol. Organized by Sojourners and 29 partners with the Washington Interfaith Staff Community. The weekly series began on March 5.

“We are witnessing brazen overreach and a Congress abdicating its duty to legislate,” Vonner said. “We urge you members of Congress to act with moral courage, protect the lives of women, children, and youth.”

The Faithful Witness events are multi-faith vigils designed to urge Congress to exercise greater moral courage in upholding its Article 1 powers and stopping executive overreach. These nonpartisan vigils speak truth to power, highlighting what’s at stake and the communities already harmed. They feature faith leaders from diverse traditions offering inspirational prayers and calls for faithful action. Vonner discussed racial justice, environmental justice, and recent government cuts among many topics.

“To the 119th Congress, you have a chance to change the course for a new beginning, a resurrection,” Vonner said. “Don’t go down in history as the betrayer of democracy, be remembered as leaders who stood for justice, truth, and people’s well-being over politics.”

“We the faith community call on you to have moral courage, honor your oath, be courageous, legislate with an eye and heart to the pressing concerns of women, children, and youth.”

Vonner’s full speech can be viewed [here](#).

## *Mourning the Pope*

April 21, 2025

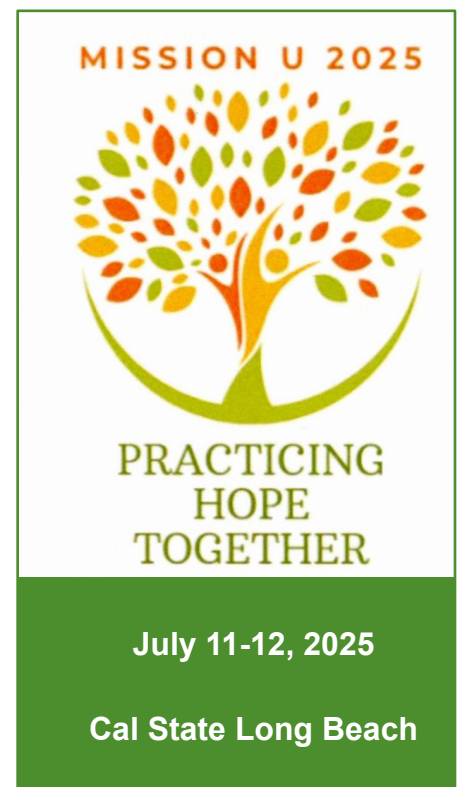
For Immediate Release

NEW YORK – United Women in Faith today mourned the passing of Pope Francis. It released the following statement which can be attributed to its General Secretary and CEO, Sally Vonner:

“Pope Francis was singularly unique. He was a friend of the poor, the dispossessed, and the marginalized. He championed care for creation, urging attention to the climate crisis. His papacy was characterized by attempts to right many wrongs in the Catholic Church and in the world.

“Pope Francis’ leadership required courage as he often went against the grain. For instance, the Pope was said to have sought to elevate the role of women within the Vatican. Earlier this year he named Sister Simona Brambilla to head a Vatican office; she was the first woman to hold this position. He also called for more grace to persons who were divorced or members of the LGBTQIA community. He will be remembered as a steadfast example of Christ’s love. United Women in Faith mourns his passing and is holding the Catholic Church in our hearts during this season of transition.”

<https://uwfaith.org/press/2025/pope-francis-was-a-friend-to-poor-and-marginalized/>





**HAYNES**  
FAMILY OF PROGRAMS



**David & Margaret**  
YOUTH AND FAMILY SERVICES

## Two Organizations, Five Service Areas, Ten Programs, One Mission:

To strengthen and empower children, young adults and families through innovative and culturally respectful trauma-informed quality treatment, education, and support services to better their lives.

### EDUCATION



#### RENAISSANCE COMMUNITY PREP / JOAN MACY SCHOOL

Renaissance Community Prep / Joan Macy School are specialized non-public schools for students, grades K-12, who have difficulty functioning in a traditional school due to learning impairments, and emotional and behavioral challenges.



#### BLISS ACADEMY

SCHOOL FOR AUTISM AND  
DEVELOPMENTAL DISABILITIES

Bliss Academy is a specialized non-public school for children ages 5-22 who have autism and other developmental disabilities. Students benefit from individualized education plans (IEPS), small class sizes, and one-to-one aides.



#### S.T.A.R. ACADEMY

##### NON-PUBLIC AGENCY

S.T.A.R. Academy is a state-approved agency offering educational specialists who provide academic support and transitional services in the home or school and support individualized education program (IEP) meetings.

### RESIDENTIAL



#### RENAISSANCE RESIDENTIAL PROGRAM

Renaissance Residential Program is a nationally accredited residential treatment center for male students ages 12-17 who struggle with emotional and/or behavior challenges. Residents benefit from on-campus housing, therapeutic care, and attend classes at Renaissance Community Prep.



#### COMPASS Programs — at David & Margaret —

##### TRANSITIONAL SERVICES

COMPASS Programs provides transition-age (18-24) youth aging out of foster care with transitional housing, permanent supportive housing, life skills and vocational training, educational support, and access to other supportive services on their journey to self-sufficiency.



##### NEW BEGINNINGS

New Beginnings provides a safe, loving, and home-like environment to children ages 6-17 who have entered the country without a parent or guardian, often when their home country is no longer a viable option to live safely. While under our care, social workers conduct a search for sponsors, usually a relative, for long-term care.

### MENTAL HEALTH



**HAYNES**  
FAMILY OF PROGRAMS

#### MENTAL & BEHAVIORAL HEALTH SERVICES

Mental health services are available to children, teens, and families including:

- Wraparound
- Full-Service Partnership
- Prevention and Early Intervention
- Outpatient Care

### FOSTER CARE & ADOPTION



**David & Margaret**  
FOSTER CARE & ADOPTION AGENCY



**Serenity, Inc.**  
Foster Care & Adoption

David & Margaret and Serenity Inc. Foster Care and Adoption agencies work in Los Angeles, Orange, San Bernadino, and Riverside counties to place children awaiting homes with approved foster families and can assist with the adoption process.

##### LONG-TERM FOSTER CARE

David & Margaret's Long-Term Foster Care program (LTFC) provides unaccompanied youth in the New Beginnings program with host families for long-term care when the search for sponsors, usually a family member, is unsuccessful.

### WORKFORCE TRAINING



**Dave & Maggie's Center**

##### STORE & CAFÉ

Dave & Maggie's Center is a social enterprise open to the public that serves as a training ground for COMPASS Program's transition age youth as they work toward self-sufficiency through paid internships.

### CONTACT US

233 Baseline Rd., La Verne, CA 91750 | 909.593.2581 | [www.leroyhaynes.org](http://www.leroyhaynes.org)  
1350 Third St., La Verne, CA 91750 | 909.596.5921 | [www.davidandmargaret.org](http://www.davidandmargaret.org)





## North District UWF Day at David and Margaret, a UWF National Mission



Original Dormitory



Autobody Shop



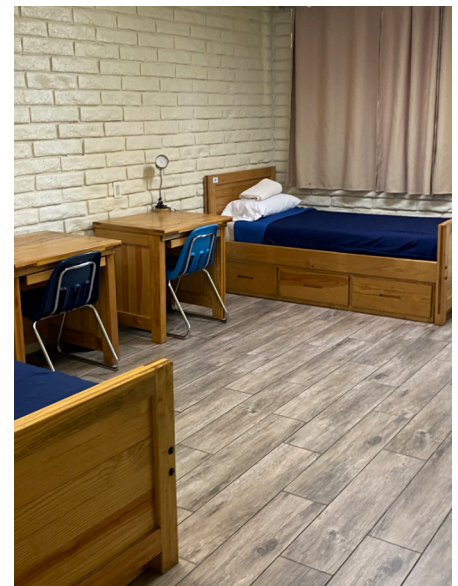
The Store enterprise to provide job experience



Original Dormitory



Complimentary Lunch



Cottage: Shared Bedroom



At Dave and Maggie's Cafe



Outside Dave and Maggie's Cafe



Cottage



## North District UWF Day at David & Margaret, a UWF National Mission

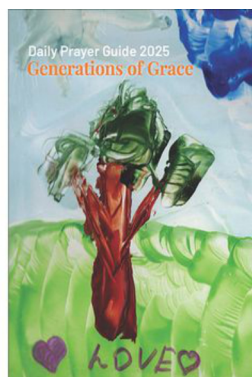






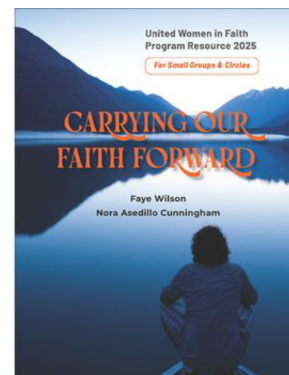
**response** is the award-winning, official magazine of United Women in Faith. We explore spiritual growth and living our faith, and report on our local, national and international work.

<https://uwfaith.org/resources/response-magazine/>



*Order your 2025 Daily Prayer Guide now: GC2025*

<https://uwfaithresources.org/prodDetail.cfm?productID=11779&catid=2186>



*Order your 2025 Program Resource book now: M3386*

<https://uwfaithresources.org/prodDetail.cfm?productID=11780&catid=2175>



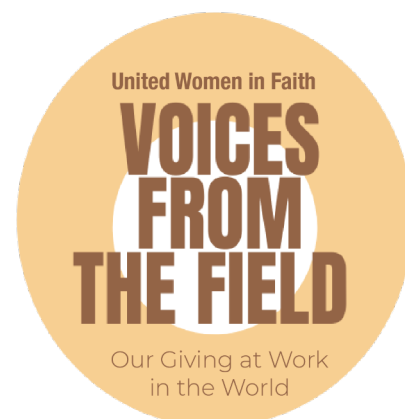
Join us for conversations with United Women in Faith, hosted by Jennifer R. Farmer. “Each month, the podcast explores timely themes and resources, from expert insights on ways to live your faith to inspiring interviews with spiritual leaders.”

Visit our [Calendar of Events](#).  
p. 29, response, May /June 2025



Tune in to audio versions of some of the top articles from each issue of **response** magazine, the award-winning official magazine of United Women in Faith. Topics cover everything from spiritual growth and living our faith to reports on local, national and international work. Visit:

<https://uwfaith.org/resources/podcasts/>



“Come learn about the national and international initiatives that benefit from Mission Giving, directly through the voices from the field. In this interactive format, you’ll hear first-hand from program leaders about their work, daily challenges, hopes and dreams.” Visit [Calendar of Events](#).

p. 29, response, May /June 2025

# ***NEW! Forms Section for your unit's use: pages 17-28***

## ***How to use fillable forms:***

If you have the free Adobe Acrobat Reader, use the tools to add your information.

Email the form to the address given or print out the completed page and photograph/scan to send it by email.

For print versions, fill out the form, then mail it to the address given.

### ***FORMS Table of Contents***

<b><i>Reading Program .....</i></b>	<b><i>17</i></b>
<b><i>Reading Reporting Form.....</i></b>	<b><i>18</i></b>
<b><i>Remittance Form.....</i></b>	<b><i>19</i></b>
<b><i>Combined Attachments.....</i></b>	<b><i>20</i></b>
<b><i>Mission Today.....</i></b>	<b><i>21</i></b>
<b><i>Charter for Racial Justice .....</i></b>	<b><i>23</i></b>
<b><i>Local Roaster.....</i></b>	<b><i>25</i></b>
<b><i>Gifts &amp; Graces.....</i></b>	<b><i>27</i></b>
<b><i>Subscriptions.....</i></b>	<b><i>28</i></b>

## **2025 Newsletter Schedule**

The purpose of the newsletter is to inspire and help unit leaders, and to promote United Women in Faith resources such as the website, **response** magazine and the 2025 Program Resource book and Daily Prayer Guide.

### **August**

Due date:

July 10

### **December**

Due date:

November 10

[uwfnorthdistrictnewsletter@gmail.com](mailto:uwfnorthdistrictnewsletter@gmail.com)

Please send your articles in to the above email by the due dates. Please send a Word file, with 12 point Times New Roman, and no formatting to allow for layout and design of the newsletter. Kim Smith, Editor

# READING PROGRAM

## Reporting Form

Formulario de Información del Programa de Lectura

독서 프로그램독서 프로그램



### PLAN I

- 5 books each year.
- 1 book from each category.
- Selections from the current reading lists if not included in previous reports.
- Regular reading of **response** magazine.

### PLAN II

- 10 books each year.
- 2 books from each category.
- Selections from the current reading lists if not included in previous reports.
- Regular reading of **response** magazine.

### PLAN III

- 15 books each year.
- 2 books from each category.
- PLUS 5 additional books from any category.
- Selections from the current reading lists if not included in previous reports.
- Regular reading of **response** magazine.

### PLAN IV

- 20 books each year.
- 2 books from each category.
- PLUS 10 additional books from any category.
- Selections from the current reading lists if not included in previous reports.
- Regular reading of **response** magazine.

Books can be purchased directly from the retailer of your choice or borrowed from your local public library.

For books on previous reading lists, go to:

**[unitedmethodistwomen.org/readingprogram](http://unitedmethodistwomen.org/readingprogram)**

## REPORT OF COMPLETION REQUIREMENTS

NAME:

PLAN CHOSEN:

I

II

III

IV

CURRENT YEAR:

### MISSION EMPHASES

Education for Mission

Leadership Development

Nurturing for Community

Social Action

Spiritual Growth

I have completed the required reading for PLAN \_\_\_\_\_. The books I have read are listed on this form.

LOCAL UNIT

DISTRICT

CONFERENCE

PRINT NAME

ADDRESS

CITY, STATE, ZIP

☐ I have also read response regularly.

response Check off the issues you have read!

--	--	--	--	--	--

Send completed form to: Marilynne Wilander, [marilynnewilander@gmail.com](mailto:marilynnewilander@gmail.com)

2018 El Sereno Ave, Arcadia CA 91007



United  
Women  
in Faith

UNITED WOMEN IN FAITH

# REMITTANCE FORM FOR ALL TREASURERS

*Thank you for giving*

Local Unit: \_\_\_\_\_ Remittance #: \_\_\_\_\_  
 District: North Date: \_\_\_\_\_  
 Conference: California-Pacific Period From: \_\_\_\_\_ To: \_\_\_\_\_

Local: Submit Remittance Form to district treasurer with every check to explain how the money should be used.

District: Consolidate local remittances. Submit Remittance Form (online or paper) to conference treasurer with check.

Conference: Consolidate district remittances. Submit Remittance Form (online or paper) to national office with check.

MISSION GIVING*	\$ Donation
1. Pledge to Mission (general)	
<b>For Conference only: Minus designated percentage of Pledge retained for budget</b>	
2. Special Mission Recognition (SMR)	
3. Gift to Mission (GTM)	
4. Gift in Memory (GIM)	
5. World Thank Offering	
* All five channels help fund the budget and count for Pledge goal. <b>Sub-Total Mission Giving</b>	<b>\$</b>
SUPPLEMENTARY GIFTS**	\$ Donation
6. A Call to Prayer and Self-Denial #3001145	
7a. A Brighter Future for Children and Youth #3001146	
7b. Assembly Offering #3001148	
7c. United Women in Faith Project Names & Codes (list below):	
7d. Enter Total from Supplementary Gifts Details Form (if attached to list more projects)	
8. Bequests #3001177 (attach copy of or excerpt of will)	
9. Other designated gifts (list):	
**6-9 are unbudgeted extra support for specific projects. <b>Sub-Total Supplementary Gifts</b>	<b>\$</b>
<b>Make check payable to:</b> <u>United Women in Faith North District</u> <b>TOTAL CHECK</b>	<b>\$</b>

Last remittance of year due: December 05, 2025 Check Number \_\_\_\_\_

Prepared by: \_\_\_\_\_, Treasurer

Address: \_\_\_\_\_

Phone: \_\_\_\_\_ Fax: \_\_\_\_\_

Email: \_\_\_\_\_

Submit to: \_\_\_\_\_

A.S. Hedges

607 Foothill Boulevard, #1549, Flintridge, California 91012

(Keep a copy of submitted forms for your financial records.)

*Remittance Form*

Form 2 (rev. 3/2022)





United  
Women  
in Faith

UNITED WOMEN IN FAITH  
**COMBINED ATTACHMENTS**  
FOR LOCAL TREASURERS

Local Unit: \_\_\_\_\_  
District: North  
Conference: California- Pacific

Remittance: \_\_\_\_\_  
Date: \_\_\_\_\_  
Period From: \_\_\_\_\_ To: \_\_\_\_\_

Local: Submit with Remittance & OR Methodistrict treasurer. May use individual forms instead.

SPECIAL MISSION RECOGNITION (SMR) ORDERS			
PIN TYPE OR DONATION	HONOREE NAME (IF KNOWN)	GIVEN BY (IF NOT YOUR UNIT)	\$ SMR
Total Special Mission Recognition (enter on Remittance & ORM)			\$

PIN TYPES: \$40 Gold pin, \$60 Sapphire, \$100 Pearl, \$200 Emerald, \$500 Ruby, \$1,000 Diamond, \$2,000 2 Diamonds.  
Please note whether you are purchasing the Cross Pin or Logo pin.  
Pins will be sent to Treasurer listed at bottom.

GIFT TO MISSION (GTM) ORDERS			Donate \$5 or more per card on Remittance Form when ordered.		
TYPE OF CARD	# CARDS	or # PACKS	TYPE OF CARD	# CARDS	or # PACKS
Peace M7078 (10)			Thank You M7079 (10)		
In the Service of Christ M7077 (10)			Encouragement M7071 (10)		
Thinking of You M7080 (10)			Happy Birthday M7076 (10)		
			Christmas M7070 (10)		

Will pick up from district treasurer? YES NO - Please email. If mailed, cards will be sent to treasurer listed at bottom.

GIFT IN MEMORY (GIM) ORDERS			Donate \$5 or more per card on Remittance Form when ordered.		
TYPE OF CARD	# CARDS	or # PACKS	TYPE OF CARD	# CARDS	or # PACKS
GIM - In Loving Memory M7068 (5/10)			GIM - Thoughts and Prayers M7069 (5/10)		

Will pick up from district treasurer? YES NO - Please email. If mailed, cards will be sent to treasurer listed at bottom.

DESIGNATED GIFTS DETAILS	\$ Donation
United Women in Faith Project Names Codes (list below):	
Total Additional Designated Gifts (enter on Remittance Form)	\$

Prepared by: \_\_\_\_\_, Treasurer  
Address: \_\_\_\_\_  
Phone: \_\_\_\_\_ Fax: \_\_\_\_\_  
Email: \_\_\_\_\_

Submit to: \_\_\_\_\_  
A.S Hedges  
607 Foothill Boulevard, #1549, Flintridge, California 91012  
(Keep a copy of submitted forms for your financial records.)

Form 3 (rev. 10/2024)



United  
Women  
in Faith

Cal-Pac Conference United Women in Faith

2025 MISSION TODAY CRITERIA

*Due December 15, 2025*

To become a Mission Today Local Organization, the Local Organization (LO) must meet EIGHT (8) of the following criteria, including a minimum of FOUR (4) of those marked with an Asterisk (\*). Return To: Diane Garner, : [rdgarner47@hotmail.com](mailto:rdgarner47@hotmail.com), 4817 Avedon Road, Moorpark, CA 93021

District Mission Education and Interpretation Coordinator's Name \_\_\_\_\_

Address: \_\_\_\_\_

E-mail: \_\_\_\_\_

Local Organization Name: \_\_\_\_\_

Contact Name: \_\_\_\_\_

E-mail / Phone: \_\_\_\_\_

### C R I T E R I A

- \_\_\_ 1. \* Use the Prayer Guide at EACH general meeting of the LO to pray for persons in mission & for our mission work with women, children, & youth.
- \_\_\_ 2. \* The LO will lead their members in the United Women in Faith Purpose EACH meeting.
- \_\_\_ 3. \* The LO will make and meet its pledge to mission.
- \_\_\_ 4. \* The LO will add at least TWO members to its roll.
- \_\_\_ 5. \* The LO will have at least TWO members subscribing to response magazine. (Order from the Mission Resource Center)
- \_\_\_ 6. \* The LO will use TWO programs from the Program Book each year.
- \_\_\_ 7. \* At least ONE member of the LO other than a Conf. or Dist. officer took Mission u Study in person or virtual class.
- \_\_\_ 8. The LO will ADD or ENCOURAGE their LO's Young Women's or Youth Circle.
- \_\_\_ 9. The LO will ADD or ENCOURAGE their LO's Language Group Circle.
- \_\_\_ 10. At least TWO members of the LO other than a Conf. or Dist. Officer attended the District or Conference Annual Celebration, in-person or virtually.
- \_\_\_ 11. At least TWO members of the LO attended any Young Women's Event in the Cal-Pac Conference, in person or virtually.

12. Members shall write to FIVE persons listed in the Prayer Guide at least once a year.
13. The LO will BE a Five Star LO, contributing to ALL FIVE channels of Mission Giving.
14. Each LO, circle, or subgroup will INCLUDE a mission moment where an article from Response magazine will be lifted up as a way to tell the mission story.
15. Have at least TWO persons from the LO, circle, or subgroup complete one of the Reading Program Plans and report on at least ONE of the books read.
16. The LO invited a District or Conference officer, other than a member of the LO, to ONE of the LO meetings during the year.

Other Mission Work:



United  
Women  
in Faith

## Cal-Pac Conference United Women in Faith 2025 Charter for Racial Justice



THIS IMAGE REPRESENTS THE COMMITMENT  
OF **UNITED WOMEN IN FAITH** TO WORK FOR RACIAL JUSTICE.  
IT SYMBOLIZES A WORLD OF RACIALLY AND ETHNICALLY  
DIVERSE PEOPLES WORKING TOGETHER SIDE BY SIDE TO  
CREATE A WORLD IN WHICH EVERY PERSON HAS A VOICE,  
RIGHTS AND OPPORTUNITY FOR ABUNDANT LIFE.  
WITHIN THE IMAGE ARE TWO HANDS JOINED TOGETHER TO  
WORK FOR JUSTICE FOR ALL GOD'S CHILDREN.

In order for a local organization(LO) to become a member of the Charter for Racial Justice Club, the Local organization must:

1. Meet the required activity marked with an Asterisk(\*)
2. Complete at least one activity from each of the three sections
3. Return completed criteria form to your District SocialAction Coordinator no later than **December 15, 2025**

District Social Action Coordinator's Name: Labarbara Madison

Address: 840 Neldome St, Altadena CA 91001

E-mail: [labarbara.madison@gmail.com](mailto:labarbara.madison@gmail.com)

Local Organization Name: \_\_\_\_\_

Contact Person's Name: \_\_\_\_\_

E-mail/Phone: \_\_\_\_\_

\_\_\_ \* Devote a meeting to studying and discussing the Charter for Racial Justice. Supply each member with a copy of the Charter for Racial Justice.

### UNIT PROGRAM (complete at least one)

- \_\_\_ 1. Hold a group study or present a program on "The History of UMW on Racial Issues."
- \_\_\_ 2. Establish a workshop to study, understand and appreciate the historical and cultural contribution of each race to the church and community.
- \_\_\_ 3. Share and discuss an article from *response* magazine relating to racism.
- \_\_\_ 4. Be creative and develop a Racial Justice learning experience for your Local Organization.

## ENRICHMENT(complete at least one)

- \_\_1. Hold a small group study of a book on racial justice from the Reading Resource Program and discussing these three questions: Who is being exploited? Who benefits from the exploitation? What are we going to do about it?
- \_\_2. Have at least one member attend a webinar or event on Racial Justice and report back to the Local Organization.
- \_\_3. Study a particular issue relating to the Charter for Racial Justice i.e.: racism, immigration rights, voting rights, racial/ethnic profiling.
- \_\_4. Develop an enrichment activity of your own related to Racial Justice.

## ACTION(complete at least one)

- \_\_1. Gather and share with Local Organization (or Sunday school class or church members) information on local school system regarding ethnic makeup, suspension rate by ethnicity, graduation rate by ethnicity.
- \_\_2. Research current legislation on racial issues and present information as a program or in a church newsletter.
- \_\_3. Research what organizations in your community are working to uncover, challenge and transform racism in local systems and institutions. Discuss how you might be a partner and/or support this work.
- \_\_4. Develop a Racial Justice action of your own choosing for your local organization or church.

## RESOURCES

The following resources may be obtained at [uwfaith.org](http://uwfaith.org)

Books from UWF Reading Program

**response** magazine

Racial Justice Timeline

History of Racial Justice

For more information go to: <https://uwfaith.org/what-we-do/serve-and-advocate/racial-justice/>



Local Organization Roster for United Women of Faith Year: \_\_\_\_\_ District: North

Church Name and Address: \_\_\_\_\_

	Name	Address	Phone (C/H)	Email
President				
Vice President				
Secretary				
Treasurer				
Chair Committee on Nominations				
Spiritual Growth Coord.				
Mission Education & Interp. Coord.				
Social Action Coordinator				
Membership Nurture, Outreach Coord.				
Program Resources Coordinator				
Communication Coordinator				

Use page 2 to add co-officers and nomination committee members and their information.

**Send completed form to Diane Garner, 4817 Avedon Road, Moorpark, CA 93021**

Local Organization Roster for United Women of Faith Year: \_\_\_\_\_ District: North  
Church Name and Address: \_\_\_\_\_

	Name	Address	Phone (C/H)	Email



# United Women in Faith

## Gifts & Graces Inventory Potential Leaders Information Form (to be completed by potential leader)

Type or Print: (Add additional sheets as necessary)

Date: \_\_\_\_\_

Name: \_\_\_\_\_

Address: \_\_\_\_\_

Telephone: (hm/cell) \_\_\_\_\_ (wk) \_\_\_\_\_ Email: \_\_\_\_\_

Member of Local Church: \_\_\_\_\_ District: \_\_\_\_\_

Age: 20's \_\_\_\_ 30's \_\_\_\_ 40's \_\_\_\_ 50's \_\_\_\_ 60's \_\_\_\_ 70's \_\_\_\_ 80's \_\_\_\_

Languages Spoken: \_\_\_\_\_ Racial/Ethnic Group: \_\_\_\_\_

Employed: No \_\_\_\_ Part Time \_\_\_\_ Full Time \_\_\_\_

Professional skills, job experience \_\_\_\_\_

Office(s) held in United Women in Faith:

	<u>Office</u>	<u>Dates of Service</u>
Local	_____	_____
	_____	_____
District	_____	_____
	_____	_____
Conference	_____	_____
	_____	_____
Jurisdiction	_____	_____

Additional experience on the local, district, conference or general church level (other than United Women in Faith), or in the community:

\_\_\_\_\_  
\_\_\_\_\_

How will your spiritual journey strengthen your commitment to serve on the North District Leadership Team?

\_\_\_\_\_  
\_\_\_\_\_  
\_\_\_\_\_

March 2025

*Return to: Megan Pinnock - District Committee on Nominations*  
*Email: [Megpinn@sbeglodal.net](mailto:Megpinn@sbeglodal.net)*  
872 E. Sacramento Street, Altadena, CA 91001



United  
Women  
in Faith

## North District Newsletter

*From the Sierras to the Seas* newsletter is for the North District United Women of Faith and is free with an email subscription. Email your name, telephone number, church and district to [calpacnorthdistrictumw@gmail.com](mailto:calpacnorthdistrictumw@gmail.com)

Cost for a mailed subscription is \$15.00 **yearly** (4 issues). Make your check payable to North District UWF and send it to the District Treasurer, A. J. Hedges, 607 Foothill Blvd, #1549, Flintridge, CA 91012. Also, send in the form below. Please print clearly.

Name:

Address:

City:

State:

Zip:

## Pacific Waves Newsletter

*Pacific Waves* is the newsletter for Cal-Pac United Women of Faith and is **free** with an **email subscription**. Email your name, telephone number, church and district to [calpacuwfcommunications@gmail.com](mailto:calpacuwfcommunications@gmail.com)

Cost for a mailed subscription is \$15.00 **yearly** (4 issues). Make your check payable to Cal-Pac UWF and send it to the Conference Treasurer, Freda Low, 8437 Village Ln, Rosemead, CA 91770. Also, send in the form below. Please print clearly.

Name:

Address:

City:

State:

Zip: