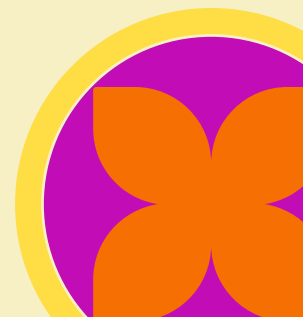
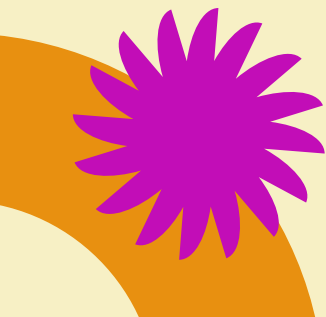


Defending Immigrants,
Building Power



Impact Report  **2025**



2025 EPIC Impacts: Turning Uncertainty into Protection, Care, and Belonging

Our Shared Story: What 2025 Required of Us

In 2025, our community faced deep uncertainty—fear driven by shifting policies, economic pressure, and the daily realities of being undocumented, first-generation, or marginalized.

EPIC's role was not to react in crisis, but to respond with clarity, care, and consistency.

With your support, EPIC became a steady presence when things felt unstable. Together, we turned uncertainty into protection, healing, and belonging—and that is the story of this year.



2025 EPIC Impacts: Turning Uncertainty into Protection, Care, and Belonging

Protection in the Midst of Fear

When people know their rights, fear loses its power.

Protection, Safety & Know Your Rights

In 2025, EPIC prioritized community safety and legal empowerment.

Impact Highlights

- Distributed thousands of **Know Your Rights (KYR) cards** across Los Angeles
- Hosted multiple **Know Your Rights workshops** with immigration attorneys (online and in person)
- Partnered with **18 community organizations** to share trusted legal information and community resources
- Created space for questions, dialogue, and collective learning—reducing fear and increasing preparedness

These were not abstract workshops. They were moments where families exhaled, asked questions, and left feeling more prepared to protect themselves and one another.

Impact:

Protection is not only legal—it is emotional. Knowing one's rights restores dignity and agency.



2025 EPIC Impacts: Turning Uncertainty into Protection, Care, and Belonging

Healing as Resistance

Care is not a luxury—it is a human right.

Uncertainty lives in the body. EPIC responded by creating spaces where healing was centered, not postponed.

Because WE SHOWED UP:

- Monthly Protect Your Neighbor / Wellness workshops grounded community members in breath, movement, and stillness
- Sana Sana gatherings reclaimed ancestral practices of care
- Participants were reminded that their bodies and minds deserve rest, safety, and attention

These spaces became anchors—places where people could slow down, reconnect, and remember they were not alone.

Impact:

Healing sustains movements. Care allows communities to keep going.



2025 EPIC Impacts: Turning Uncertainty into Protection, Care, and Belonging



Belonging Through Convivios (Community Celebrations)

Even in hard seasons, EPIC chose community.

Because WE SHOWED UP:

- EPIC mothers were honored during Día de las Madres with grocery support and meaningful community connections
- Families gathered to share stories, gratitude, and leadership
- During our annual EPIC Posada, 150 youth received \$50 gift cards, a tangible reminder that they belong and are cared for

These moments said something powerful: You are seen. You matter. You belong here.

Impact:

Belonging transforms survival into **community care**.



2025 EPIC Impacts: Turning Uncertainty into Protection, Care, and Belonging

Investing in Future Leaders

Exposure & preparation change what young people believe is possible.

In 2025, EPIC invested in young people not as recipients of services, but as leaders in the making.

Because WE SHOWED UP:

- Youth participated in Un Verano con EPIC, receiving mentorship, career exploration, financial literacy, and mental health support
- First-generation students visited UCLA, seeing themselves reflected in higher education spaces
- Youth explored Los Angeles history and creativity through a partnership with Art Division, including hands-on screen-printing
- At our annual Back-to-School Drive, EPIC distributed over 150 pairs of new shoes, backpacks, and school supplies, ensuring students began the school year with dignity, confidence, and the tools they need to succeed



For many families, these resources were more than supplies—they were a signal that their children's education and future mattered.

Impact:

When young people are equipped and affirmed, they show up differently—to school, to opportunity, and to their own potential.

2025 EPIC Impacts: Turning Uncertainty into Protection, Care, and Belonging

Stability During Transition

Safety creates space for rebuilding.

Transitional Housing Program

- Hosted 4 individuals in 2025
- Provided members with essential resources and guidance
- Partnered with Immanuel Presbyterian Church to provide these spaces for families and individuals

Impact:

Stability allows people to move forward with dignity.



2025 EPIC Impacts: Turning Uncertainty into Protection, Care, and Belonging

2025 Impact By the Numbers

- 396 community members served
- 356 volunteer hours contributed
- 18 active community partnerships

These numbers matter because they represent people, relationships, and trust.



Healing Circle Series Testimonies

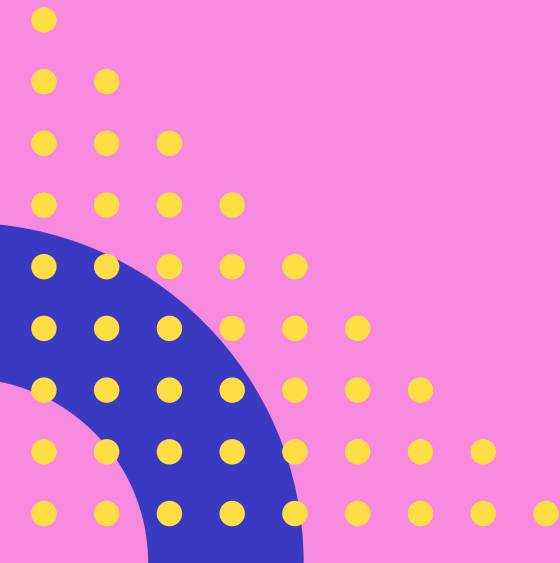
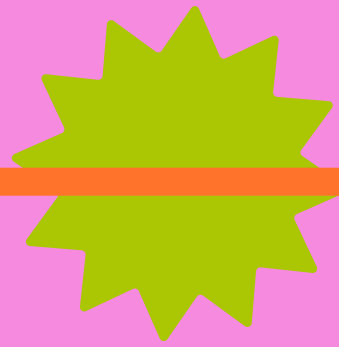
“When I attended, I didn’t realize how much I was holding in my body as a queer, undocumented person. Days before the session, there were two immigration raids that happened around my neighborhood. As I followed Erica’s guidance through gentle yoga, my body learned to let go of whatever I was unintentionally carrying, since that raid had manifested and compounded my anxieties. Perhaps it was the reminder Erica kept on posing throughout the session that really did it for me: Life is sacred. In the face of everything that makes us think otherwise, [these circles are] an invitation to tap into all that is divine innately within each of us.” - S.H. (Participant prefers to only share initials)

“I had a great experience at the sana sana series..This political climate has impacted me physically, emotionally, and somatically. For the first time in a while, I was able to calm my mind and fully tap into mindfulness and relaxation. I wish more spaces like this existed for fellow mental health providers, students, parents/ caregiver, and community members to learn and practice yoga and mindfulness but also to hold each other in community.” - Martha



“Erica created a welcoming and accessible space for us to be and feel however we needed. Her invitations, paired with music and movement, created a gentle space to unravel, unload, and release some of what we’re holding, even if just for a moment. What I enjoyed most is being a part of an inter generational space and expressing ourselves in our first language (Spanish). With so much violence facing our community, the [healing circle] sessions provide an essential space to feel connected and held by community.” -Mayra

Our EPIC Community



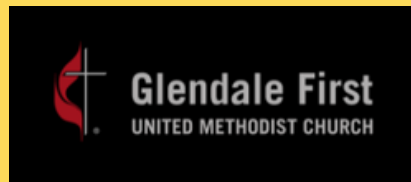
Our Partners & Collaborators



CALIFORNIA-PACIFIC CONFERENCE



CHIRLA
Coalition for Humane
Immigrant Rights



Erica Rey



Marilyn Figueroa