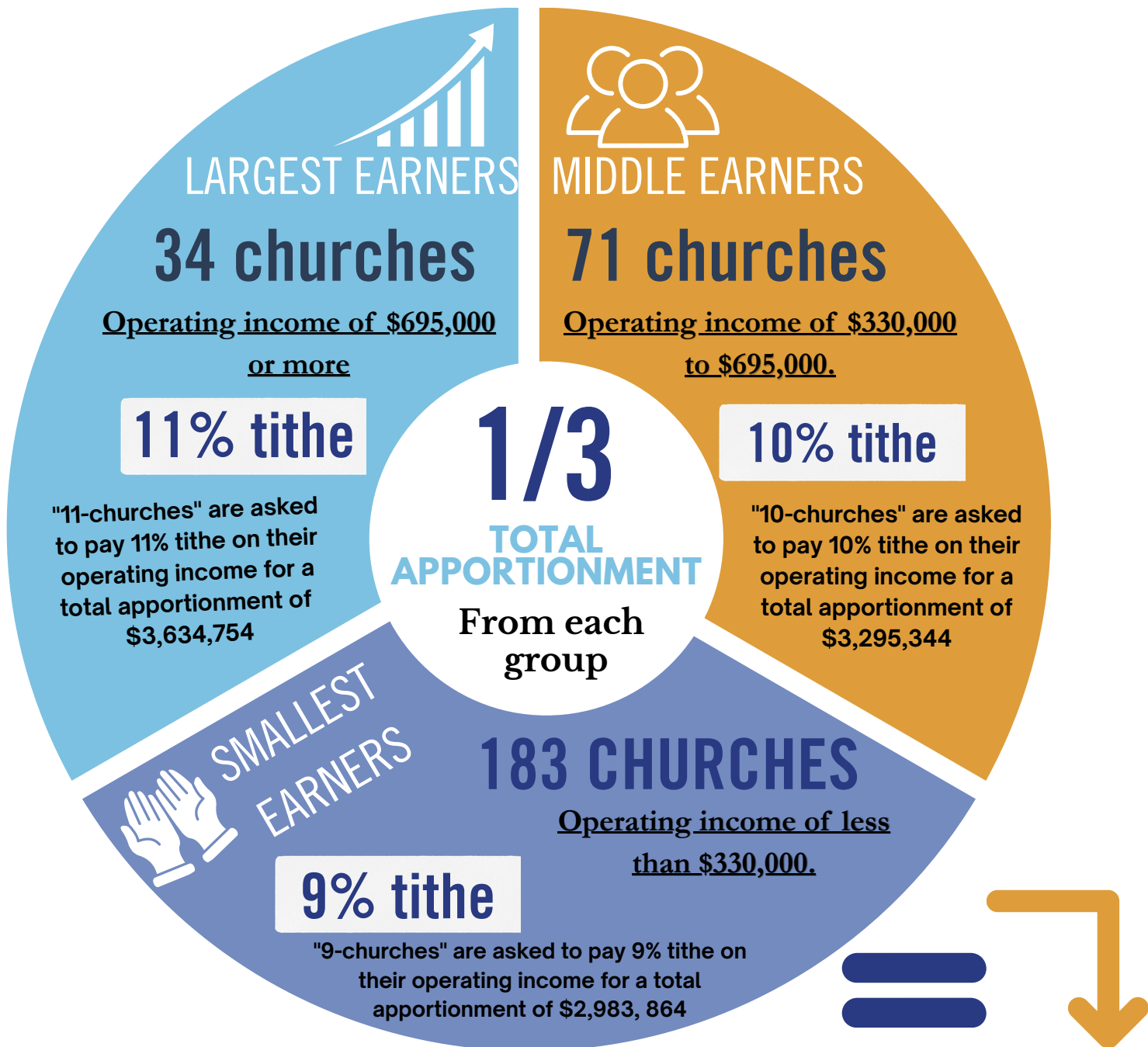


# CALCULATING A 2027 GRADIENT APPORTIONMENT

## THE 11-10-9 MODEL



Churches contribute based on operating income to create a balanced and equitable ministry share model.



### Key Definitions

#### “INCOME”

refers to income earned to support the annual operating budget/spending plan of the church (aka “operating income”).

#### 2025 Reporting Reference:

- Line 52
- Total of lines 52a to 52g

### Total 2027 \$ Apportioned to Churches

# \$9,913,962

The “TOTAL INCOME” from 2025 of churches apportioned in 2027 (all churches operating income added together) was \$99 million